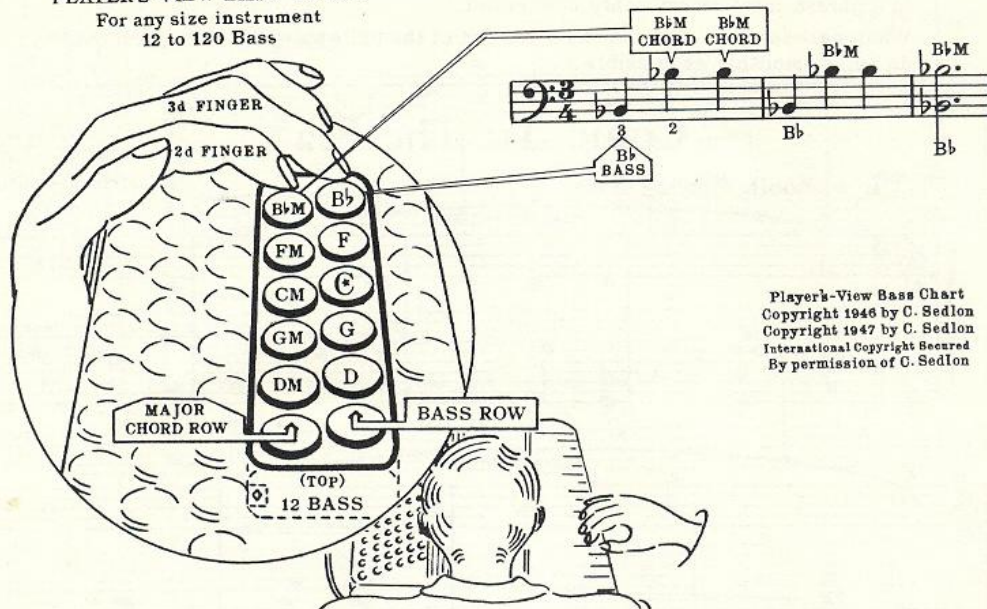


## ACCORDION LESSONS – LESSON 13

## Locating the B $\flat$ BASS and CHORD Rows

### PLAYER'S-VIEW BASS CHART

For any size instrument  
12 to 120 Bass



Player's-View Bass Chart  
Copyright 1946 by C. Sedlon  
Copyright 1947 by C. Sedlon  
International Copyright Secured  
By permission of C. Sedlon

## BASS WARM-UP

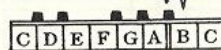


## For He's a Jolly Good Fellow

## The FLAT

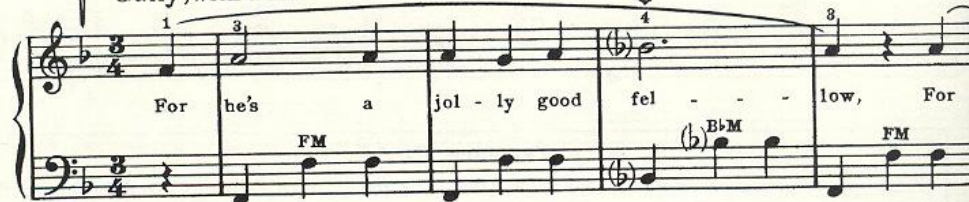
A Flat sign(b) in the Signature tells us that the piece is written in the Key of F and all B's must be played flat throughout.

**B FLAT** is the **NEAREST**  
Black key to the left.



## Folk Song

Gaily, with a lilt



he's a jol - ly good fel - - - low, For he's a jol - ly good

CM FM



fel - - - low, That no - bod - y can de - ny. That

BbM CM FM

no - bod - y can de - ny, For that no - bod - y

FM BbM FM

can de - ny. For he's a jol - ly good

BbM FM

fel - - - low, That no - bod - y can de - ny.

BbM CM FM

### QUIZ

When a curved line connects two notes on the *same* line or space it is called a .....

If a curved line connects two or more *different* notes, it is called a .....

Notes thus grouped into musical sentences are called a .....

(Refer to pages 17 and 27.)