

ACCORDION LESSONS – LESSON 38

38 44

Home On The Range

Slowly Cowboy Song

Oh give me a home where buf - fa - lo roam, Where deer and
p CM G7 CM FM CM

an - te - lope play, Where sel - dom is heard a dis -
D7 G7 CM G7 CM

cour - ag-ing word, And skies are not cloud - y all day.
FM CM G7 CM

Home, home on the range, Where deer and
CM G7 CM

an - te - lope play, Where sel - dom is heard, a dis -
D7 G7 CM G7 CM

cour - ag-ing word, And skies are not cloud - y all day.
FM CM G7 CM

Bass Solo

3 2 5

Neapolitan Nights

45

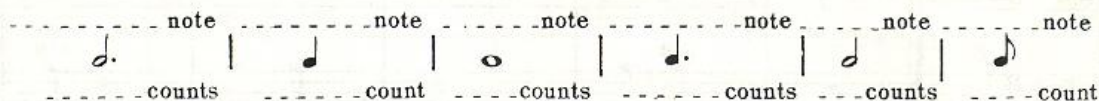
J. S. ZAMECNIK

Broadly, in a singing style

Oh nights of splendor, your charms so
ten der. Make love sur ren der
'til stars are gone; Oh, nights of
laugh ter, 'tho tears come af ter,
Love's re grets, love for gets when comes the dawn.
Oh, comes the dawn.

FINAL QUIZ

Write in the names and number of counts for each of the notes shown below.

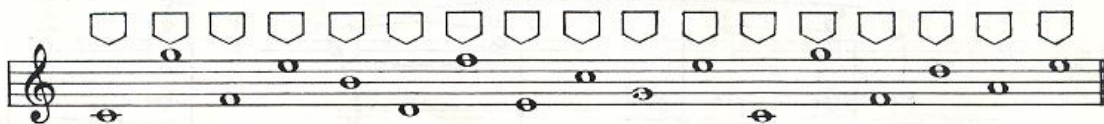


All music is divided into _____ by _____ lines.

This sign C is called the _____ and means all notes are to be played with the _____ hand.

This sign F is called the _____ and means all notes are to be played with the _____ hand.

Write in the boxes the letter names of the notes below.



A curved line connecting two notes on the SAME line or space is called a _____.

A curved line connecting two or more notes on DIFFERENT lines or spaces is called a _____.

A musical sentence is called a _____.

How many counts are there in each measure in $\frac{3}{4}$ time _____? In $\frac{4}{4}$ time _____?

The capital letter M means to play the _____ Row of basses.

The small letter m means to play the _____ Row of basses.

The figure 7 after the bass letter symbol means to play the _____ Row of basses.

Write the letter names of the basses on the dotted lines below:



Rests are signs of _____.

Write the names of the rests shown here _____ rest _____ rest _____ rest.

Write the number of counts for each rest here _____ counts _____ count _____ counts.

Play from memory the C, G, F and B \flat MAJOR SCALES with the right hand.

ANSWERS ON NEXT PAGE:


FINAL QUIZ


Write in the names and number of counts for each of the notes shown below.

Dotted Half note Quarter note Whole note Dotted Quarter note Half note Eighth note

3 counts 1 count 4 counts 1 1/2 counts 2 counts 1/2 count

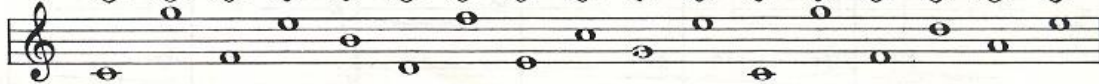
All music is divided into Measures by Bar lines.

This sign  is called the Treble Clef and means all notes are to be played with the Right hand.

This sign  is called the Bass Clef and means all notes are to be played with the Left hand.

Write in the boxes the letter names of the notes below.

C G F E B D F E C G E C G F D A E



A curved line connecting two notes on the SAME line or space is called a Tie.

A curved line connecting two or more notes on DIFFERENT lines or spaces is called a Slur.

A musical sentence is called a Phrase.

How many counts are there in each measure in $\frac{3}{4}$ time 3? In $\frac{4}{4}$ time 4?

The capital letter M means to play the Major Row of basses.

The small letter m means to play the Minor Row of basses.

The figure 7 after the bass letter symbol means to play the Seventh Row of basses.

Write the letter names of the basses on the dotted lines below:

Chord Rows

G^M D⁷ F^M A^m C^m G⁷ B^{flat} D^M F^m C⁷ G^M E^{flat} D⁷ A^M

Solo Rows

F C E B^{flat} G D B F C A E G B

Rests are signs of Silence.

Write the names of the rests shown here Half rest Quarter rest Whole rest.

Write the number of counts for each rest here 2 counts 1 count 4 counts.

Play from memory the C, G, F and B^b MAJOR SCALES with the right hand.

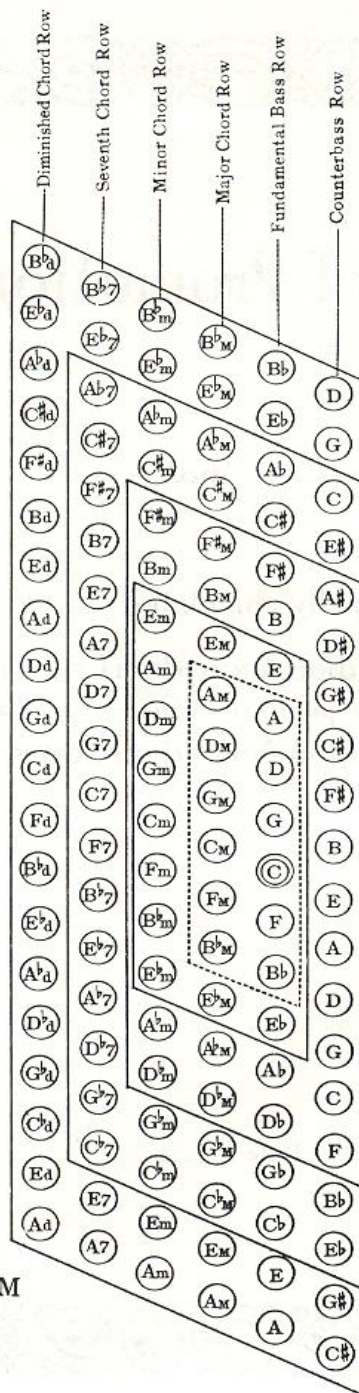
REFERENCE PAGE FOR THE ACCORDION BASSES:

GLOSSARY

47

MIRROR - VIEW BASS CHART

TOP



BOTTOM

The basses within the dotted lines indicate the range of the 12 bass accordion.

The basses enclosed by the other lines indicate the 24, 48, 80, and 120 bass ranges.

M indicates the Major Chord.

m indicates the Minor Chord.

7 indicates the Seventh Chord.

dim indicates the Diminished Chord.

All notes written *above* the third line are played in the chord rows.



All notes written *on or below* the third line are played in the fundamental bass row or the counterbass row.



If a dash is placed under it, the note is played in the counterbass row.

